

# NFSTAC Resources for Families, Family Peers, and Family-Serving Organizations

The [National Family Support Technical Assistance Center](#) has created a wealth of resources to assist you in accessing and promoting person-centered, family-driven supports for caregivers of loved ones of all ages with mental health and/or substance use challenges.

Check out all more family-centered resources on our [Virtual Resources Library](#). Don't see the resource you're looking for? Reach out to us at [ffcmh@ffcmh.org](mailto:ffcmh@ffcmh.org)!

## Resources for Families



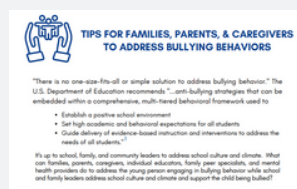
[NFSTAC Family & Caregiver Toolkit](#)



[TAC Talk Series on Family Members' Substance Use \(Video Library\)](#)



[Harm Reduction Through the Family Lens \(Online Course\)](#)



[Tips for Families, Parents, & Caregivers to Address Bullying Behavior](#)

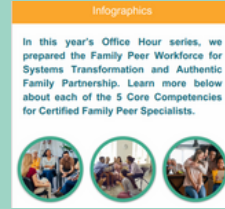


[A Week of Well-Being for the Holiday Season Toolkit](#)

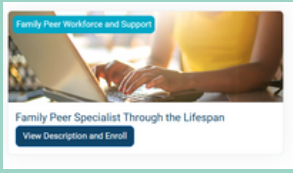
## Resources for the Family Peer Workforce



[NFSTAC Family Peer Workforce Toolkit](#)

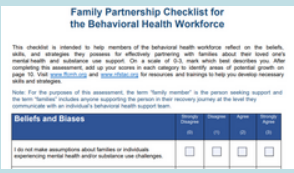


[Combined Core Competencies Infographic](#)



[NFSTAC Family Peer Specialist Through the Lifespan Online Curriculum \(Online Course\)](#)

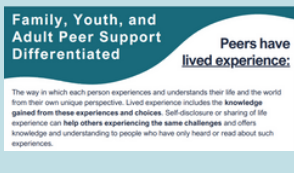
## Resources for the Behavioral Health Workforce



[Family Partnership Checklist for the Behavioral Health Workforce](#)



[Partnering with Families in Behavioral Health: The FAMILY Approach \(Online Course\)](#)



[Family, Youth, and Adult Peer Support Differentiated](#)

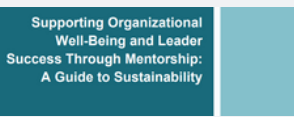


[Family Engagement: Families and Schools Working Together Toolkit](#)



[Supporting Family Members of LGBTQ+ People](#)

## Resources for Leaders



[Supporting Organizational Well-Being and Leader Success Through Mentorship: A Guide to Sustainability](#)



[Family Peer Specialist Certification: Optimizing Organizational Flow to Prepare FPS to Apply Part 1 and Part 2](#)



[Optimizing Organizational Flow to Prepare Family Peers to Apply for Certification](#)

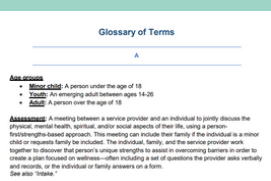


[Tips for Supervisors Supporting Family Peers in Writing Lived Experience Narratives](#)



[Interview Questions to Understand a Candidate's Family Lived Experience](#)

## Resources to Advance Person-Centered, Family-Driven Language in Behavioral Health



[NFSTAC Glossary of Terms](#)



[The Combined Reframing Language Guide](#)